



CASE STUDY

Pro Set Coats A \$7,000,000 House in Ft. Lauderdale

Mr. Ken Shimm, a developer throughout the U.S. and who lives in Ft. Lauderdale, has a 2500 square foot observation deck on top of his \$7,000,000 home.

Originally lined with a urethane top coat over a concrete base, the urethane was installed very thin (2 mls) in some places and thousands of pin holes throughout the coating.

Water got into the deck and into the home, damaging much furniture, that was designed by Michael Dougless' interior consultant.

Pro Set was contracted by Joe McVay, an engineer with Crain Engineering in Naples, Ft. Lauderdale and contracted by Mr. Shimm to solve the problem.

When we arrived we conducted many adhesion tests, primer and spray to insure complete satisfaction by the customer and to us.

Once satisfied we started to prepare the surface. The urethane coating provided many problems since it was thin in areas and when applied was put over wet concrete causing blisters.

The blisters and loose urethane had to be removed by grinding approximately 60 - 70% of the 2500 deck.

Once the surface was smoothed we were able to apply an epoxy primer.

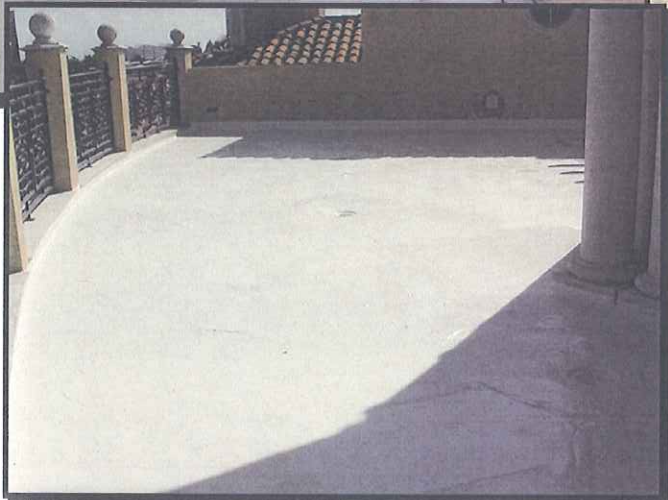
After taping and masking the walls, pillars, cabinets under the west bar and all columns we were ready to spray.

We started spraying the drains which were also a problem allowing water to enter around the flange.

Then we applied 80 mls of our Poly Pro Polyurea over the entire surface completely sealing off the deck.

We offered a 15 year warranty with this project and Mr. Shimm was so impressed with the product and our application he gave us 3 more projects to do at some of his shopping malls.

BEFORE / DURING



AFTER

