



CASE STUDY

Pro Set Converts A Mud Hole Into A Large Polyurea Lined Pond In Jacksonville, Florida

The Swisher Estates in Jacksonville, Florida, famous for their cigars, has a large pond totally 3500 square feet fed by Artisian well water. Basically a mud hole with several islands, along with the walls of the ponds eroding away from the water.

Three ponds were separated by a thin wall, and the purpose of the walls was to waterfall into the next pond and so on.

The walls were deteriorated so badly that water was going through rather than over.

We were contracted to come up with a way to coat the pond.

We first had to remove all the mud that had been in the pond for years.

Then the rocks that had been part of the landscape for years also had to be removed.

Next, Geo Textile fabric was used as a base in which to spray our polyurea.

We formed the Geo Textile fabric to the side of the walls and sprayed the fabric with 100 mils of Poly Pro Polyurea.

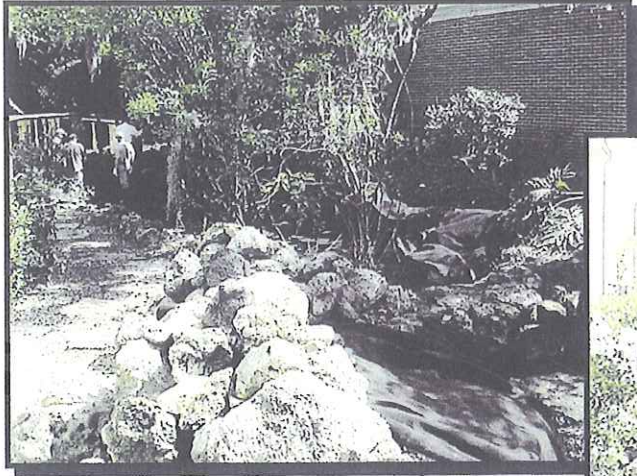
It was imperative to get complete coverage with Polyurea to avoid leaks as water would pass through naked cloth.

Several pressure relief valves were installed at the bottom of each pond to eliminate pressure in case water is trapped underneath.

Once spraying was complete the rocks were put back in place on the side of the ponds.

One picture illustrated how environmentally friendly the finished product is. In one picture we are spraying and two racoons are walking side by side immediately behind us.

BEFORE



AFTER

